

# Heating Green's Infrared Hot Yoga Installation Guide

Before installing any Heating Green product, please make sure the product voltage matches the electrical service on-site!

## Tips for heater placement and installation:

- Even placement around the studio. Avoid clustered groups or any big spots without heaters- similar to installing lights.
- All heaters should be at the same level to ensure even & timely heating. Coves and Ceiling heaters can be suspended from shed or cathedral ceilings to be at a consistent height.

All heaters and components should be installed by a licensed electrician and should be in accordance with electrical code.

This guide serves as a visual and conceptual aid for planning and the following documents should be also referenced when installing:

- Wiring Diagrams
- Installation & Operation Manuals from the manufacturer
- Paid Invoice from Heating Green

Questions about Installation?  
Contact Heating Green Support!



Live Support M-F 8:30 am -  
4:00 pm PST



360-715-4328 x103  
Heating Green Support Center  
[support@heatinggreen.com](mailto:support@heatinggreen.com)



# Electrical Flow Chart

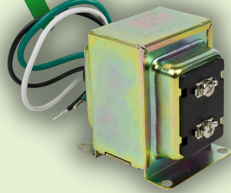
## 1 Electrical Panel

Locate the electrical panel to measure voltage for electrical service (208, 240, 277)  
One dedicated 20 or 30 amp relay per circuit



## 2 Transformer

A Transformer steps down voltage to 24v to power thermostat & relays



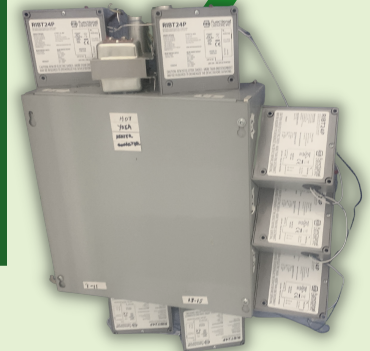
## 3 Thermostat



The Thermostat communicates to relays turning the heaters on/off and measures the ambient temperature of the studio.  
Recommended installation on interior wall out of direct sunlight at 5' AFF

## 4 Relays

One relay controls multiple heaters. one dedicated Circuit per Relay  
Recommended installation is near the electrical panel, outside of studio



## 5 Infrared Heaters

Cove 1500w Heaters  
Wall or Ceiling Mount  
Reaches surface temperature of over 300°



# Cove Heater Studio View



5

Infrared Heaters

1

Electrical Panel

2

Transformer

3

Thermostat

4

Relays

Items 1, 2, and 4 are typically located or installed outside of the studio near the electrical panel or mechanical room.



# Wall Mounted Cove

1,500 Watt Cove Heater



- 1 Ceiling Clearance: Minimum clearance of 6" between the top of the heater and the ceiling
- 2 Clearance between heaters and combustible objects: Heaters should be evenly spaced with at least a clearance of 6"-12"
- 3 Sprinkler Clearance: The face of Wall mounted heaters should be at least 3' away from sprinkler heads
- 4 Floor to Ceiling Clearance: Heaters should be mounted 7-8' above the floor from the bottom of the heater.

# Ceiling Mounted Cove

1,500 Watt Cove Heater



- 1 No additional clearance required with use of 2.25" ceiling brackets
- 2 Clearance between heaters and combustible objects: Heaters should be evenly spaced with at least a clearance of 6"-12"
- 3 Clearance from Adjacent Walls: Heaters should be at least 2' away from adjacent walls
- 4 Floor to Ceiling Clearance: Heaters ideally should be at 9-10' above the floor

# Cove Heater Studio Clearances

Disclaimer: This is a visual representation of the clearances to install these heaters up to code with common fixtures & features. All this information can be found in an installation manual and if there are any questions Heating Green Support should be contacted.